



SKR SERIES

Top Entry Mixer

Coaxial Shaft

High Performance Mixers

The SKR coaxial agitator series are high performance agitators equipped with two impeller systems each with an independent drive and control system. The unique design allows for integration of several processes in one unit. Processes with wide ranges of viscosity can be achieved with the SKR series, from water like substances to one million cP. The SKR can also be an alternative to kneaders and blenders.

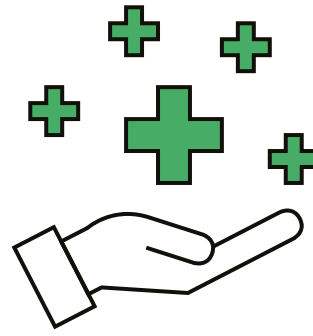
SPECIFICATIONS AND TECHNICAL DATA

Models	SKR [Shaft diam._Volume]
Motor Power	1,5 - 160 kW
Shaft Diameter	40 - 200 mm
Key Applications	Chemical Processing: Adhesives & Sealants, Synthetic Rubber, Paints & Coatings, Waxes



KEY BENEFITS

- The 2 Drive System enables the combination of different process steps like e.g. blending, suspension, dissolving and heat transfer.
- Wide range of impeller systems can be adapted to process requirements.
- Additional lab tests enable us to scale up to full production scale.
- Sealing systems range from seal rings, to stuffing boxes and high tech double-acting mechanical seals.



SKR Mixing High Fiber Liquids

This process involves creating highly fiber-filled products with final viscosities of up to 250,000 cP. Specifically designed for Zone 0 (continuous explosive area), the system incorporates two double-acting mechanical seals along with supply and monitoring systems. It combines high-flow impellers positioned in the center with specialized peripheral helical ribbon components to optimize performance.



SKR Mixing Adhesives

This system offers a versatile solution for blending various products with viscosities ranging from 1 cP to over 1 million cP, effectively handling different mixing tasks; suspension, and dissolution of solids. Designed for use in explosive areas incorporating two double-acting mechanical seals. The setup utilizes a combination of sigma impellers positioned in the center and specialized peripheral anchor impellers to achieve optimal mixing performance.



SPXFLOW®

SPX FLOW, Inc. reserves the right to incorporate our latest design and material changes without notice or obligation. Design features, materials of construction and dimensional data, as described in this bulletin, are provided for your information only and should not be relied upon unless confirmed in writing. Please contact your local sales representative for product availability in your region. The green "➤" is a trademark of SPX FLOW, Inc.

For more information, visit www.spxflow.com.